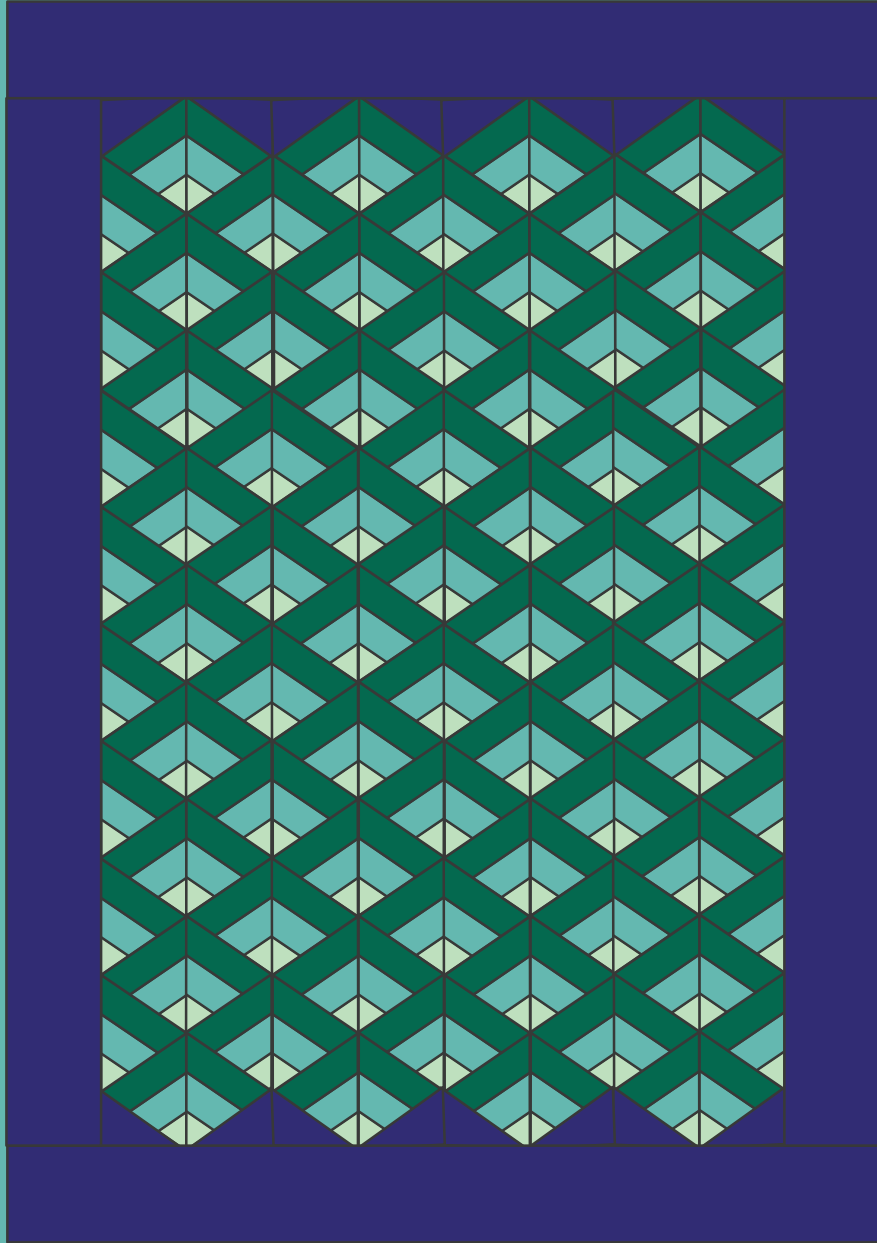


Garden Terrace Quilt



Sew Yeah Quilting

63 x 78

Materials:



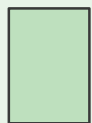
Fabric A: 2 yards dark

Cut (28) 2 1/2" x WOF strips



Fabric B: 2 yards medium

Cut (28) 2 1/2" x WOF strips



Fabric C: 2 yards light

Cut (28) 2 1/2" x WOF strips



Fabric D: 2 yards border and setting triangles

Cut (8) 7 1/2" x WOF strips

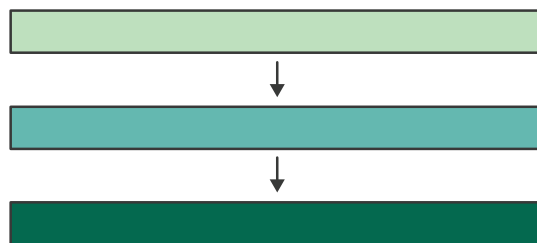
Cut (1) 6 1/2" x WOF strip for triangles

Backing: 4 yards

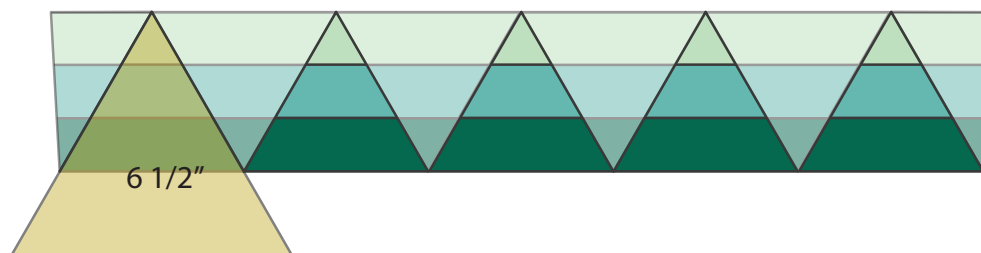
Binding: 1/2 yard

Sewing Instructions:

Sew the 2 1/2" strips together from fabrics A, B, and C, keeping fabric B in the middle of the set. Press seams. Fabric C will be the top of the triangle and fabric A will be the bottom.

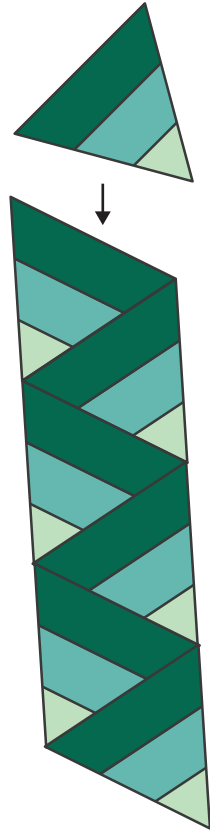


Using a 60 degree ruler, cut out 6 1/2" triangles from the sewn strip as demonstrated. For this quilt we will only be using one side so that all triangles look exactly the same. You need 136 triangles. Set aside the opposite side to create a second quilt with a reverse effect, if desired.

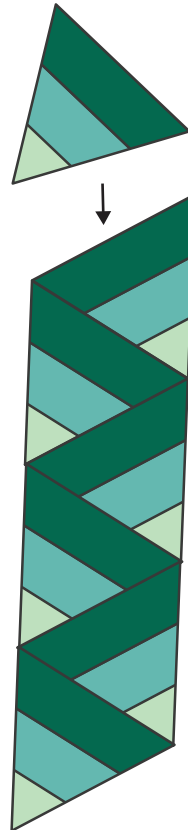


Set your triangles into 8 piles of 17 each. You will create the rows vertically by alternating the direction of each triangle, according to the diagram. There are 2 different orientations, create 4 rows of each.

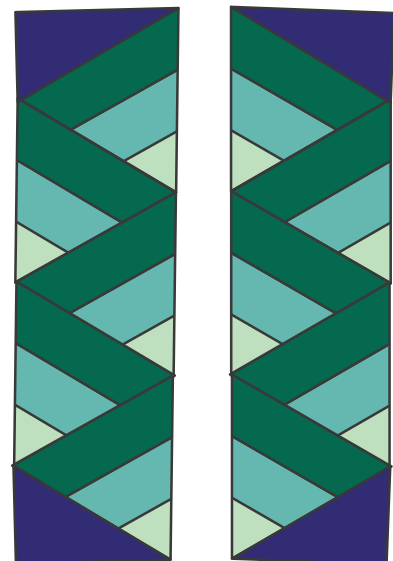
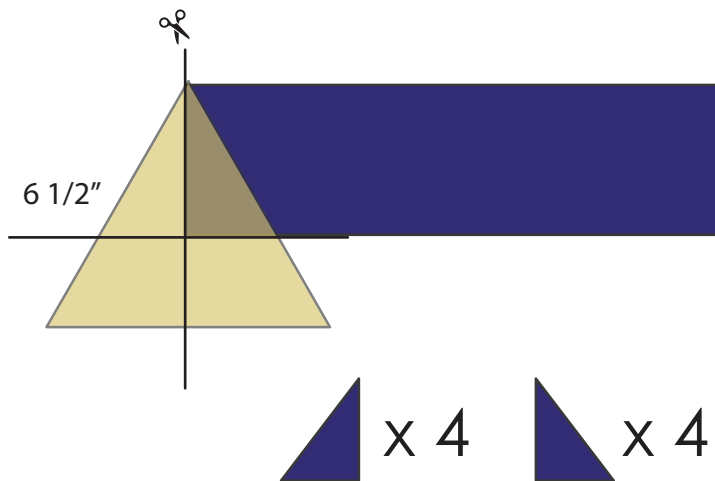
Orientation 1:



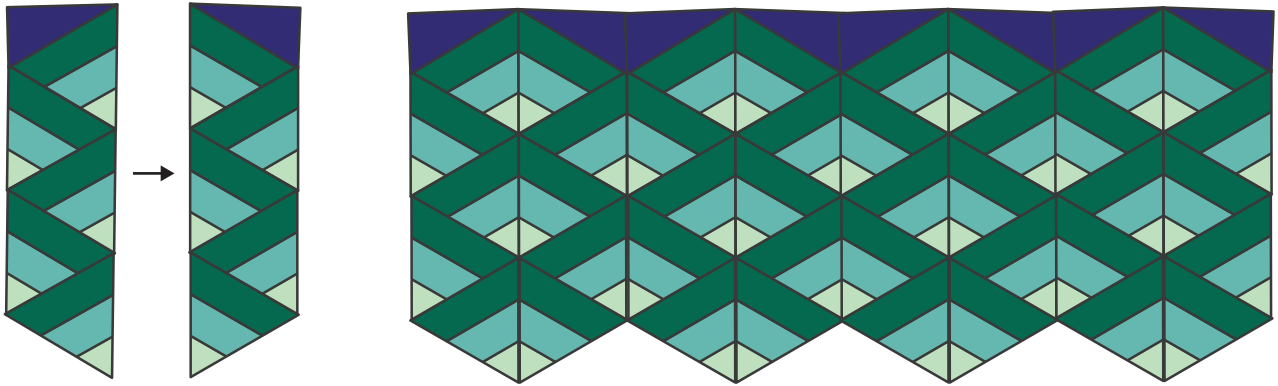
Orientation 2:



Once the vertical rows are sewn, add the setting triangle from Fabric D to either end of each row. To make the setting triangles, use the 60 degree ruler and cut half of a full triangle (30 degrees). Cut a total of 8.



Put a row from each set together, creating the diamond effect. Create 4 sections, then sew all the sections together, completing the main unit, measuring approximately 49 x 64.



Measure the sides of the main unit and cut the side borders, making sure they are both the same length. Sew them to the main unit. Measure the top and bottom of this new unit and cut these borders making sure they are both the same length. Sew these to the top and bottom, completing the quilt top.

